

HARBOUR INFORMATION

Tyne VTS are available 24/7/365 on VHF Ch.12,
by telephone 0191 257 2080 or email - tynevts@portoftyne.co.uk

The following applies at all times to every vessel of 20m or more in length
which intends to enter or navigate within the Port.

The Master Shall;

- Ensure the vessel carries fixed or portable VHF/RT equipment capable of communication with Authority's VTS hereafter referred to by its call sign "Tyne VTS"
 - At least 24 hours prior to arrival or on leaving the last Port, whichever is later, give notice to the Harbour Master of the vessel's estimated time of arrival in Port and on coming within VHF range of Tyne VTS or 2 hours prior, whichever is soonest, give the vessel's time of arrival and report to Tyne VTS when passing or at the following points:
North Pier Lighthouse, Whitehill Point, Bill Quay.
 - Report to Tyne VTS when 'All Fast', 'At Anchor' and when 'Underway'
 - Report to Tyne VTS any of the following conditions:
 - Unseaworthiness in any respect.
 - Defective main engine or any other auxiliary machinery, including thrusters, which may affect the manoeuvrability of the vessel.
 - Inoperable equipment.
- Such vessels shall not navigate within the Port except with the permission of the Harbour Master and in accordance with any instructions he may give.

The following applies at all times to every vessel, regardless of length, which intends to enter or navigate within the Port.

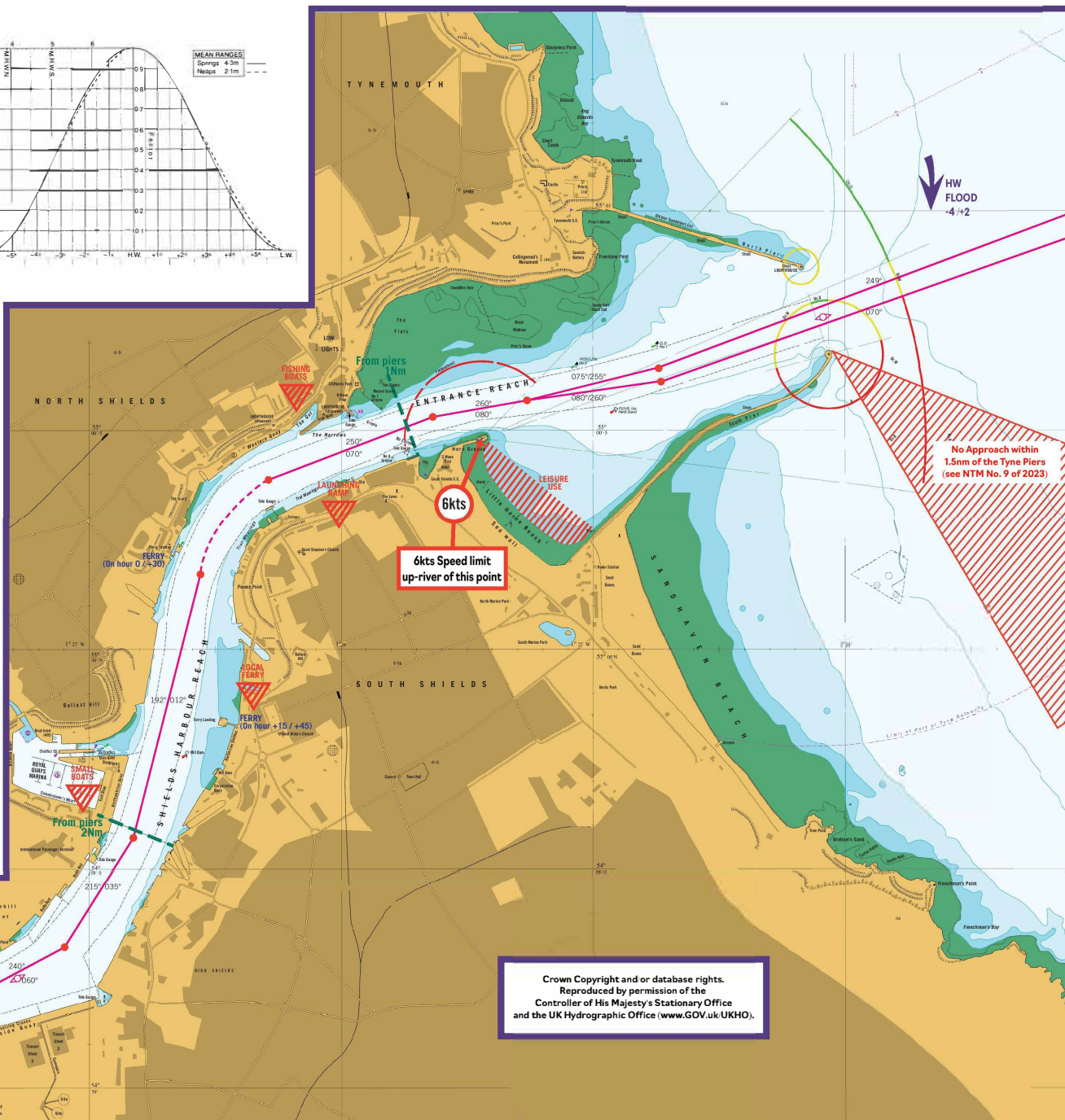
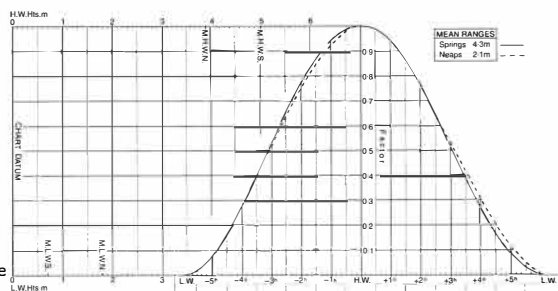
- Towage operations are not permitted in the harbour without permission from Tyne VTS.
- Speed limit westward of Herd Groyne Light is 6 knots over-the-ground.
- All vessels should proceed on the starboard side of the channel whenever possible unless the vessel is turning or crossing.
- The Master of every vessel underway in the Port shall ensure that the vessel is under the direct, manual control of a competent helmsman and that the vessel is not steered by any device or equipment designed to function in place of the helmsman.

General Information

- Fishing vessels when underway in the Port or approaches to the Port must keep a listening watch on Channel 12 and inform Tyne VTS when:
 - towing or hampered in any way or
 - when in the approaches to the Port with mines, bombs or other dangerous items on board.
- Diving operations are not permitted without permission from Tyne VTS.
- Every vessel of 50m or more in length requires a pilot or pilot exemption certificate.
- Live forecast wind, tide and visibility information are available from Tyne VTS.
- Pilot boarding station is located 2.5nm ENE off the North Pier Lighthouse.
- A full copy of Port Byelaws and General Directions can be found on the Port of Tyne Website.
- Beaching of craft within Port limits is not permitted.

RIVER TYNE PASSAGE PLAN

NOT TO BE USED FOR NAVIGATION
COURSE LINES AND COURSES MARKED ARE FOR GUIDANCE ONLY





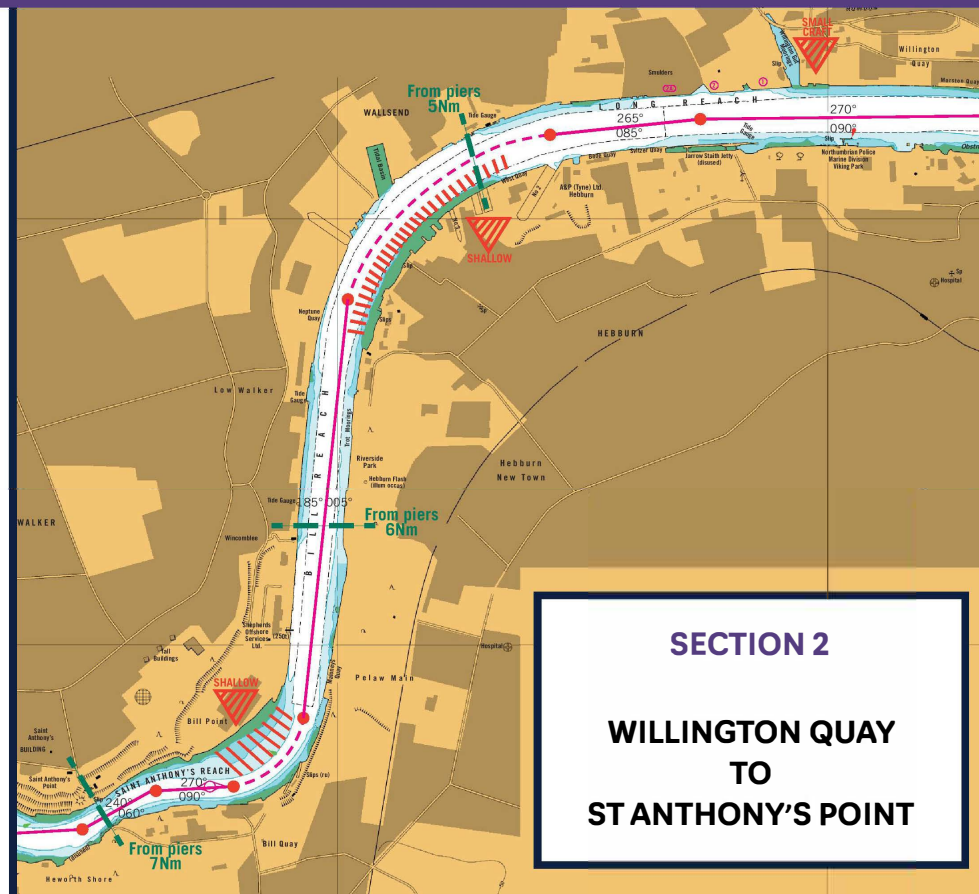
RIVER TYNE PASSAGE PLAN

HARBOUR INFORMATION

Tyne VTS are available 24/7/365 on VHF Ch.12,
by telephone 0191 257 2080 or email - tynevts@portoftyne.co.uk

**NOT TO BE USED FOR NAVIGATION
COURSE LINES AND COURSES MARKED ARE
FOR GUIDANCE ONLY**

Crown Copyright and/or database rights.
Reproduced by permission of the
Controller of His Majesty's Stationary Office
and the UK Hydrographic Office (www.GOV.uk/UKHO).



SECTION 2

**WILLINGTON QUAY
TO
ST ANTHONY'S POINT**

SECTION 3

ST ANTHONY'S POINT TO DUNSTON

